

Workshop 1:

Avoid

Niklas Sieber

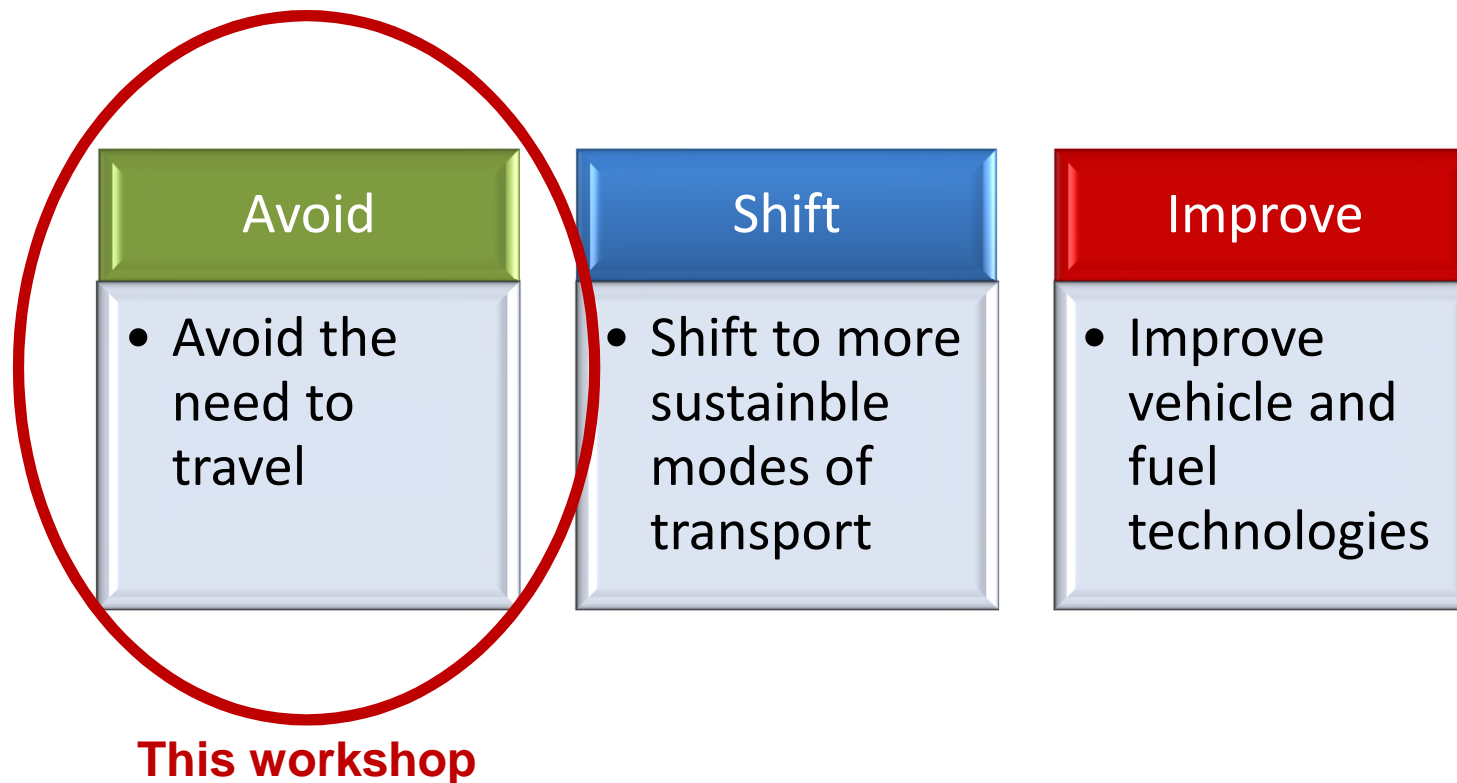
TCP International

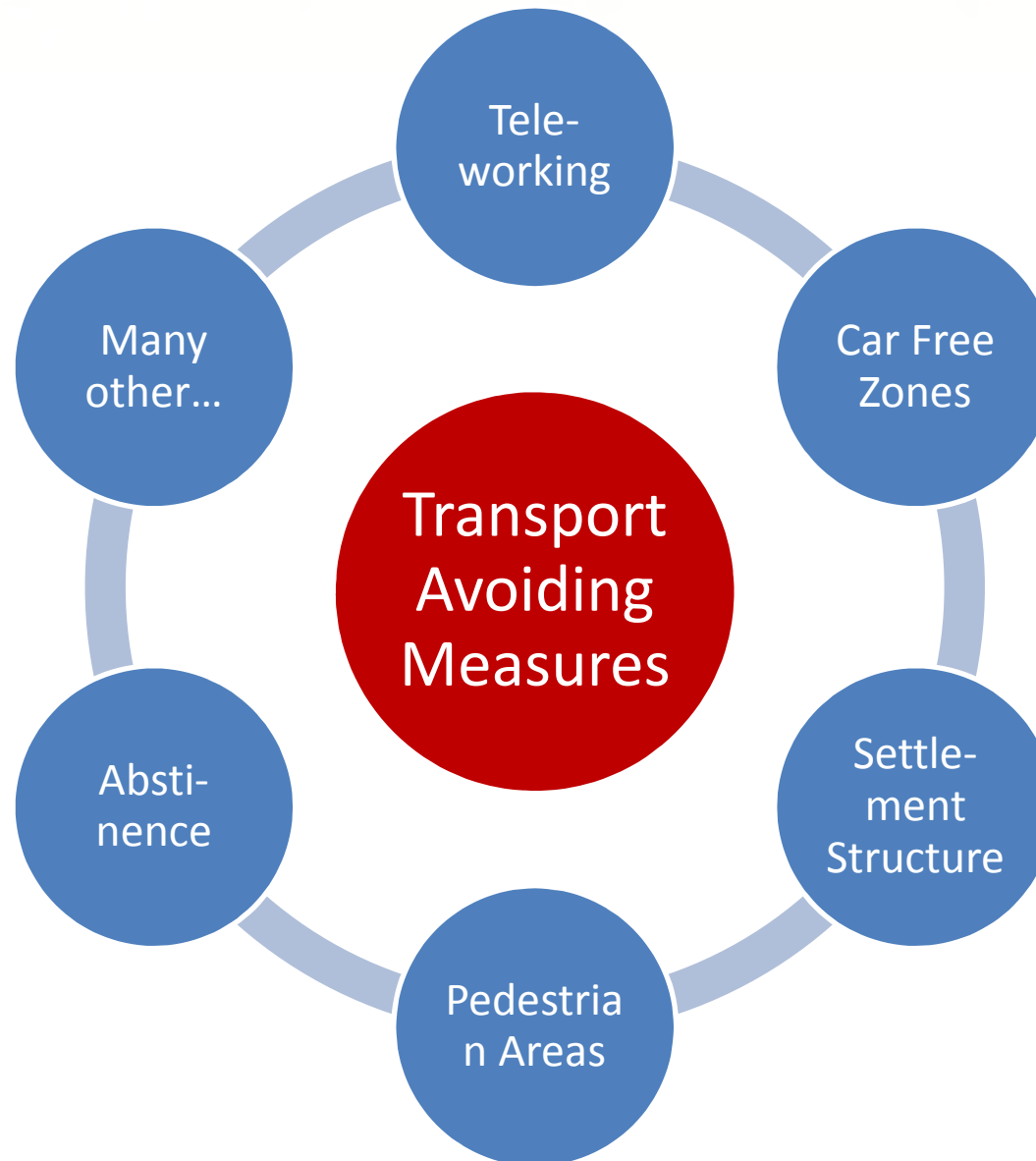
Stuttgart

June 2, 2014

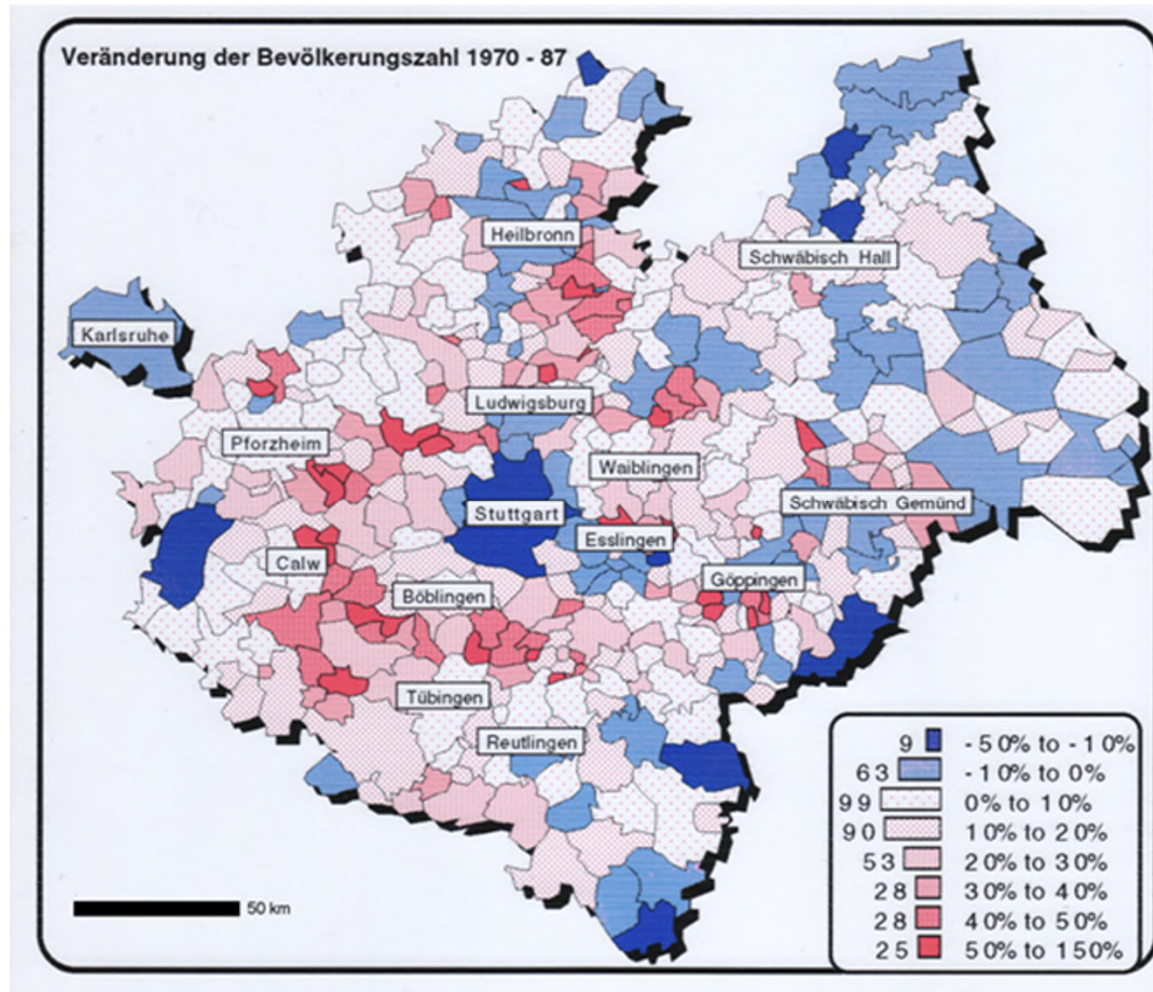
**STRATEGY
PLANNING
ENGINEERING**

3 Strategies for Sustainability in Transport





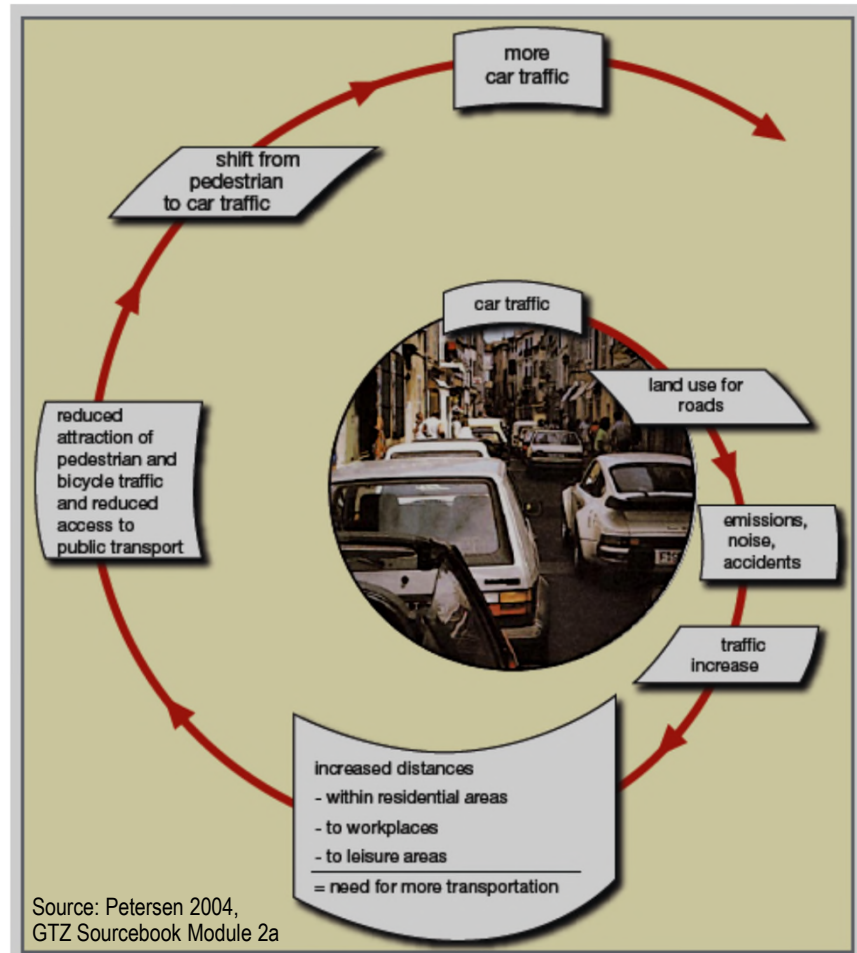
Urban Sprawl



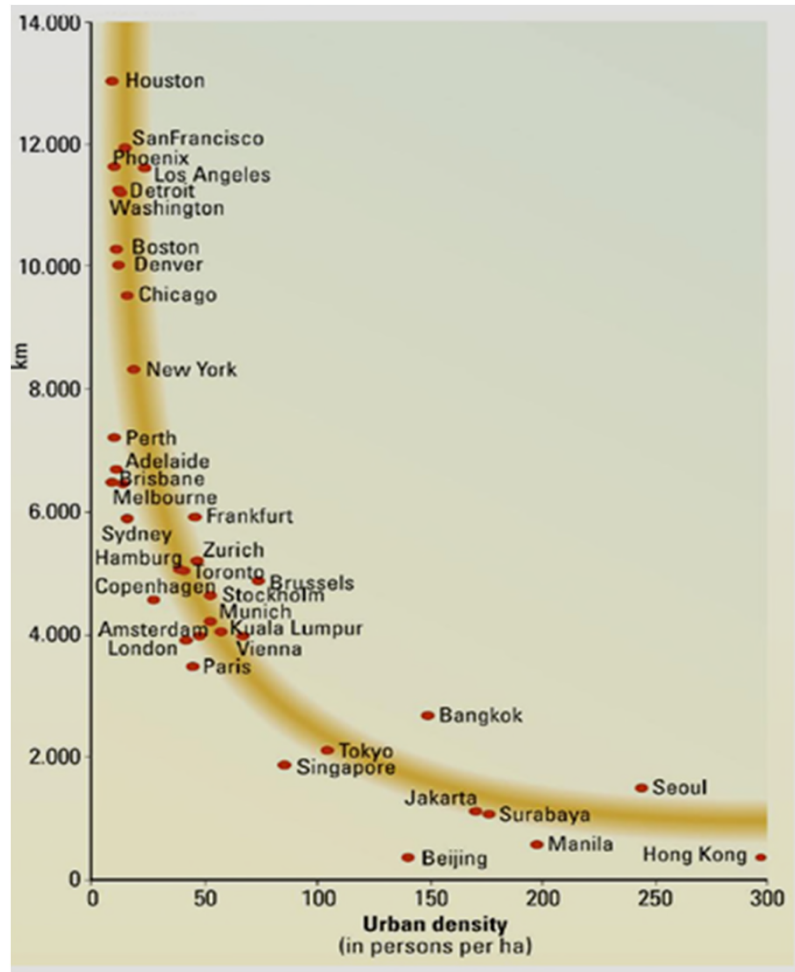
Example Stuttgart:

- Change of Population 1970-87
 - Urban inhabitants moved to the outskirts of towns or to rural communities
- = **Urban Sprawl**

Traffic Land-Use Spiral



Urban Sprawl generates Transport

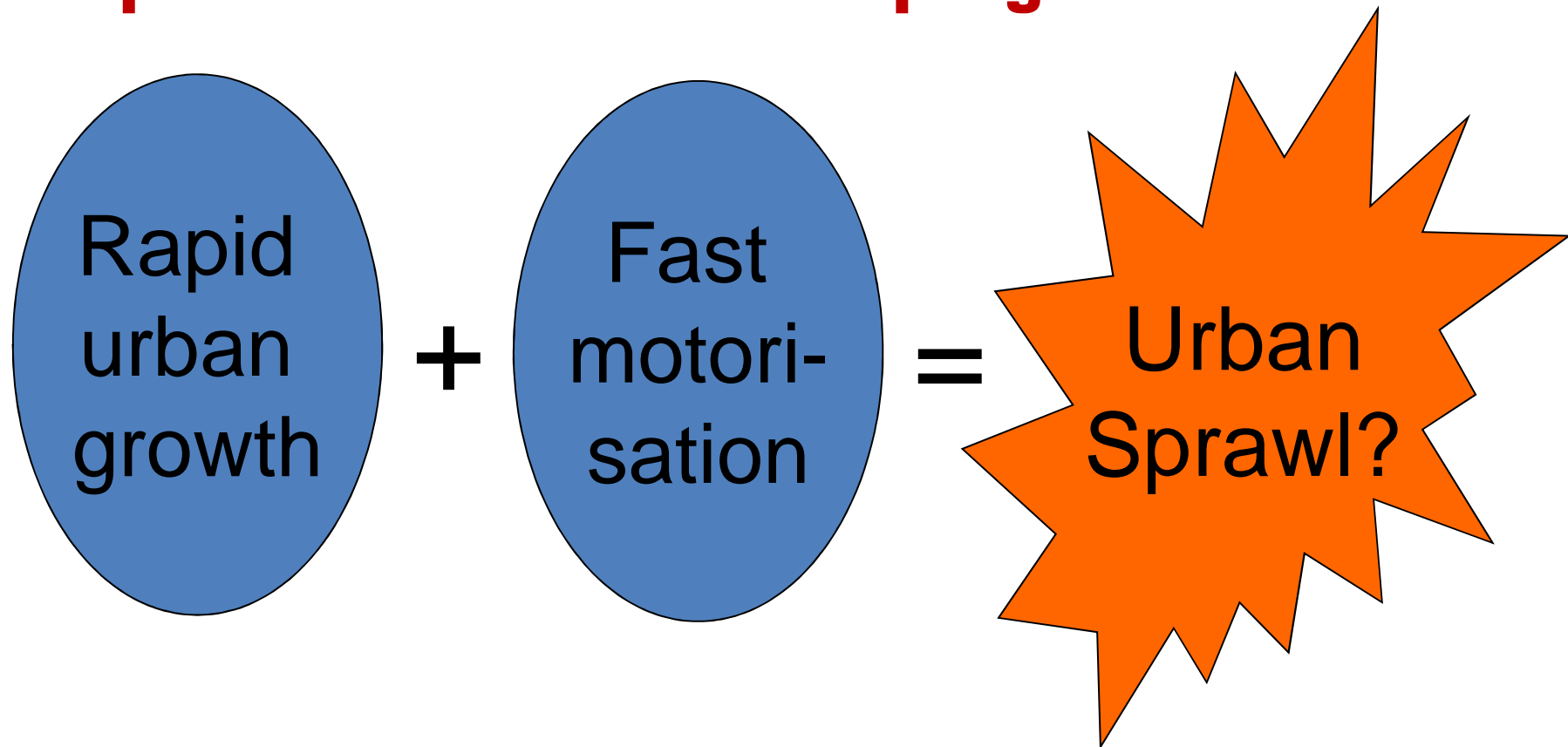


Low urban densities generate

- large transport volumes
- are not suitable for public transport

=> high energy consumption

Implications for Developing Cities



Which Direction for Developing Cities?

Mumbai:
8.3 m inhabitants



Cairo:
8.9 m inhabitants



Los Angeles
8.4 m inhabitants



Blackplots from the 1990s

Source: Sieverts 1997

Energy-efficient settlement structures

REGIONALPLAN
REGION STUTTGART

Zentrale Orte und Entwicklungsachsen



Energy Efficient Settlements

Features of energy-efficient settlement structures

Point-axles systems,
Densification of population
along axles

Decentral Concentration

Planning of Satellite Centres

Endowment of centres with
central facilities

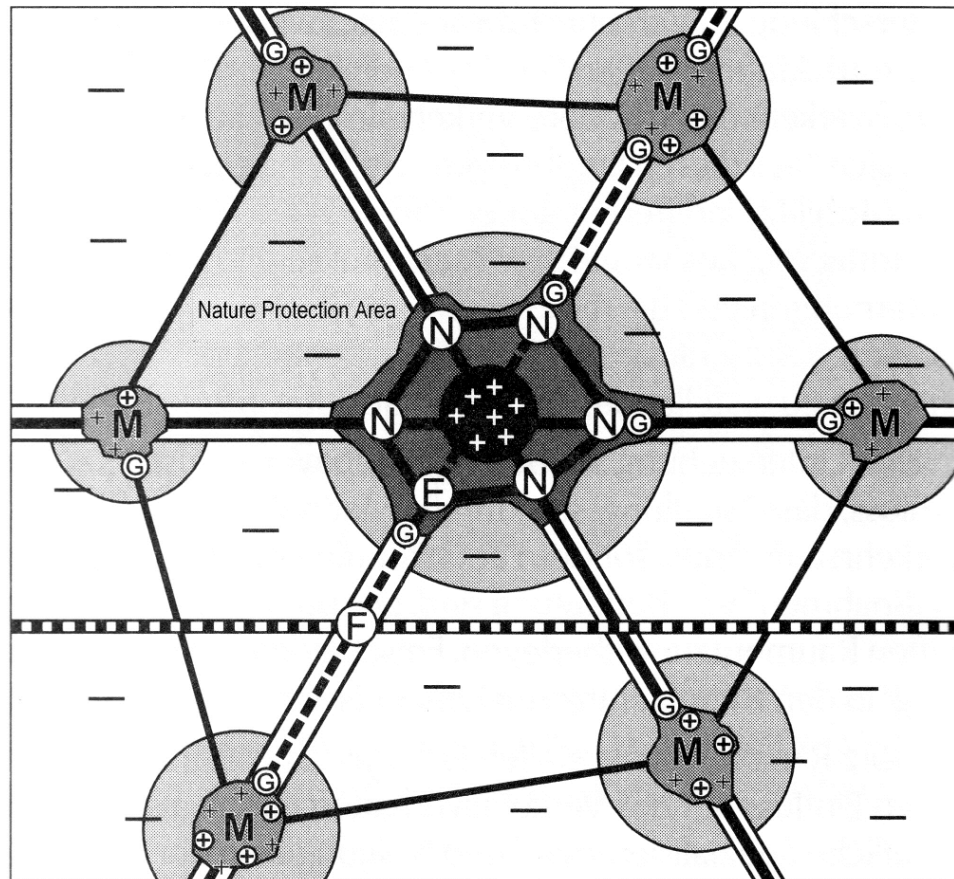
Densification of Development
Cernels

Green Belts

Mixed land-use for residents
and business

Recreational areas and public
space

Regional Plans for less Traffic



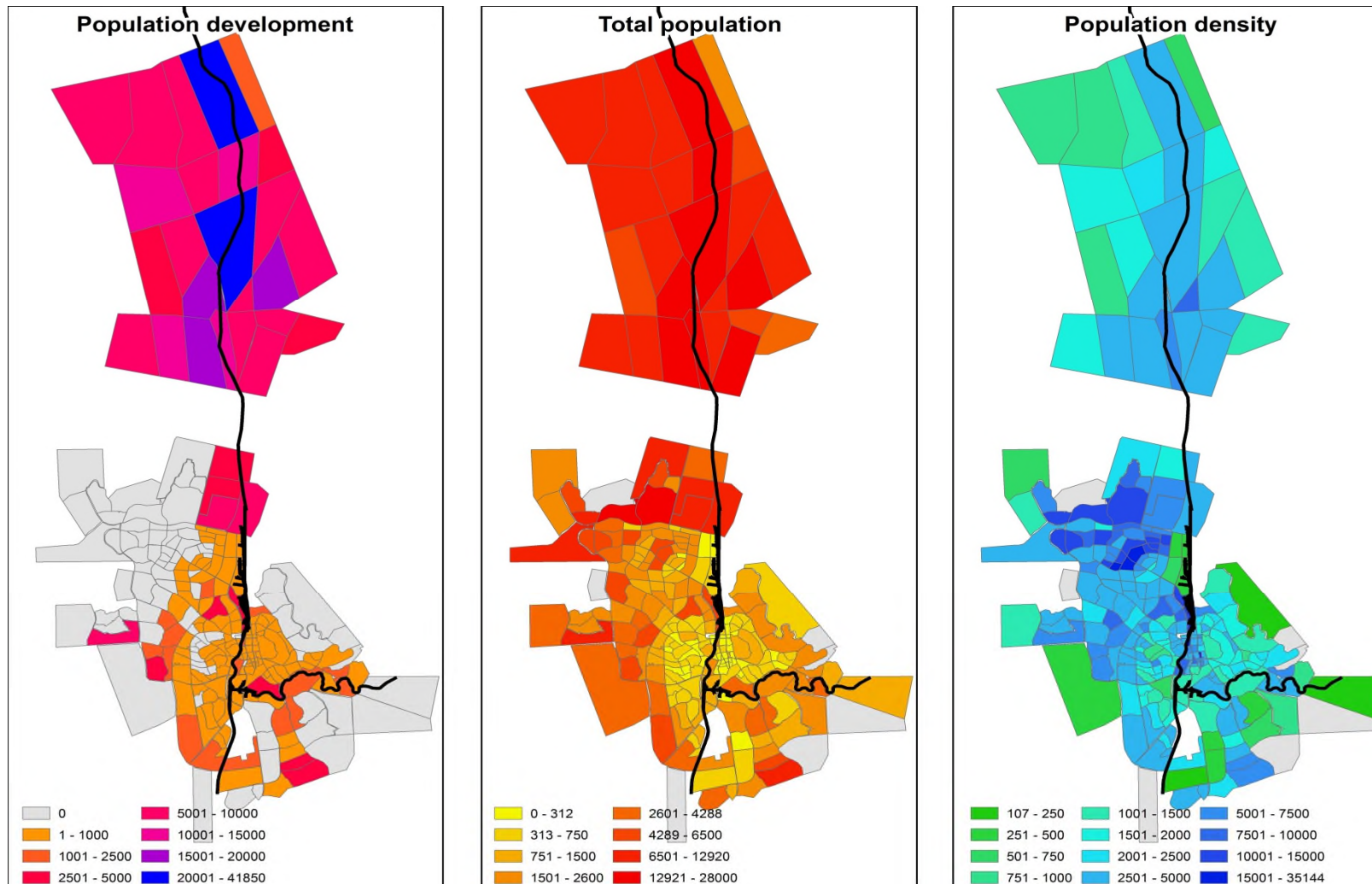
Planning features of a region with less car traffic



Example: TOD in Curitiba Brasil



Example: Windhoek, Namibia



Thank you for your attention



Presentations in this workshop

- **Juan Carlos Escudero,**
City of Vitoria-Gasteiz (Spain)
The commitment of a city towards active and sustainable mobility
- **Andrew Nash**
Transport and City Planner, Vienna (Austria)
Car-free Housing and Transport
- **Christoph Welz**
Siedlungswerk Stuttgart (Germany)
New urbanism – new mobility a chance to avoid traffic,
the development of the „Rosensteinviertel“ Stuttgart

Questions for this workshop

- Which of the ideas presented would be suitable for your town?
- Which own measures to avoid transport have you developed?
- What are the main constraints in implementing the proposed measures?